

DESCRIPTION

The Livi Key Fob control panel (hereafter referred to as the panel) is designed to enable/disable a security alarm system, to launch scripts and to send an alarm signal to the [Livi Smart Hub](#) (hereafter referred to as the hub).

The panel is designed as a key fob, which has 4 programmable buttons. By default the function of enabling the site's guard is assigned to the first button (2A).

PANEL APPEARANCE



1. LED indicator
2. Buttons
3. Retaining screw
4. Battery

BINDING THE PANEL TO THE HUB

The panel must be unpacked and allowed to reach room temperature for at least two hours before handling if it was transported or stored at low temperatures.

1. Press the uppermost (2A) and lowest (2D) buttons on the panel and hold them until the indicator (1) starts blinking blue. The panel will be switched to the binding mode.
2. In the [Livicom app](#), open the "Devices" screen. In the upper right corner of the screen tap **+** and select "Add Device". The panel indicator will blink green 5 times

The panel switches to the binding mode only for 60 seconds. If you have not bound it to the hub within this period, press the uppermost (2A) and lowest (2D) buttons on the panel again and hold them until the indicator (1) starts blinking blue.

EVALUATING SIGNAL STRENGTH

Double-click on the lowest button (2D) of the panel and look at the panel indicator. Interpret the indication using the table below.

Good signal	The indicator blinks green 3 times
Average signal	The indicator blinks green twice
Poor signal	The indicator blinks green once
No connection	The indicator blinks red 4 times

SITE GUARD ENABLING AND DISABLING

By default settings press the button (2A) to **enable full guard** of the site. Make sure that the panel indicator has blinked green once.

The Livicom system checks statuses of all security sensors when it is enabling the guard. If the system fails to switch some sensors into the guarding mode, then the panel indicator will blink yellow 3 times and the guard of the site won't be enabled.

If you want to enable the full guard **with the exception of some sensors** (for example, if you intentionally left the window open for ventilation), then make two more attempts to enable the full guard. On the third attempt the site's full guard will be enabled, but some sensors will not perform guarding functions. The panel indicator will blink green once to confirm enabling the guard.

By default press the button (2B) to **disable full guard** of the site. Make sure that the panel indicator blinks green twice.

DELETING THE PANEL (UNBINDING FROM THE HUB)

There are two ways to unbind the panel from the hub:

1. In the Livicom app, on the panel settings screen.
2. Using the panel buttons: press the uppermost (2A) and lowest (2D) buttons on the panel and hold them for at least 10 seconds (until the indicator (1) starts blinking blue).

PANEL MAINTENANCE

Keep the panel free of dust and dirt. Replace the battery as soon as possible after you receive a low battery notification in the Livicom app.

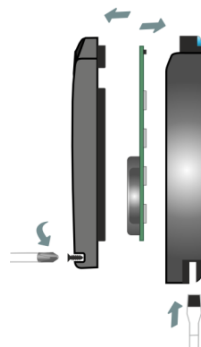
Attention

Do not wipe the panel with substances containing alcohol, acetone, gasoline and other active solvents

REPLACING THE BATTERY

Follow these steps to replace the battery:

1. Loosen the retaining screw.
2. Open the panel enclosure: insert a flat screwdriver into the hole in the bottom of panel enclosure and push out the panel lid.
3. Remove the battery (4) and install a new one, observing polarity.
4. Close the panel enclosure and fasten the retaining screw.



SPECIFICATIONS

Operating frequency	868 MHz
Guaranteed operating range in open areas	up to 1000 m
Radio channel power	25 mW
Current consumption in operation mode	up to 30 mA

Power source (3 V)	battery CR2032
Operating temperature range	from -20 to +55 °C
Relative humidity	no more than 80% at 25 °C
Dimensions	61 x 35 x 13 mm

SUPPLY SET

Livi Key Fob control panel	1
Lithium battery CR2032 (3 V)	1
Packaging	1

LED INDICATION

A button on the panel is pressed	The indicator blinks white once
Full guard is enabled	The indicator blinks green once
Full guard is disabled	The indicator blinks green twice
Night guard is enabled	The indicator blinks blue once
Night guard is disabled	The indicator blinks blue twice
Guard enabling error	The indicator blinks yellow 3 times
Sending an alarm signal to the hub	The indicator blinks red 5 times
Turning on an endpoint device	The indicator blinks green once
Turning off an endpoint device	The indicator blinks green twice
Command execution failure	The indicator blinks red once
Binding mode	The indicator blinks blue for 1 minute
Confirmation of successful binding	The indicator blinks green 5 times

WARRANTY

The manufacturer LLC "NPP Stels" guarantees that the panel meets AGNS.421453.001 TU technical requirements, provided that the consumer complies with the conditions of transportation, storage, installation and operation.

The warranty period is 5 years from the manufacturing date. The warranty does not apply to batteries.

The warranty does not cover the following cases:

1. Non-compliance with the intended operating conditions;
2. Mechanical damage to the panel;
3. Repairs to the panel by a third party (a person or a company other than the Manufacturer).